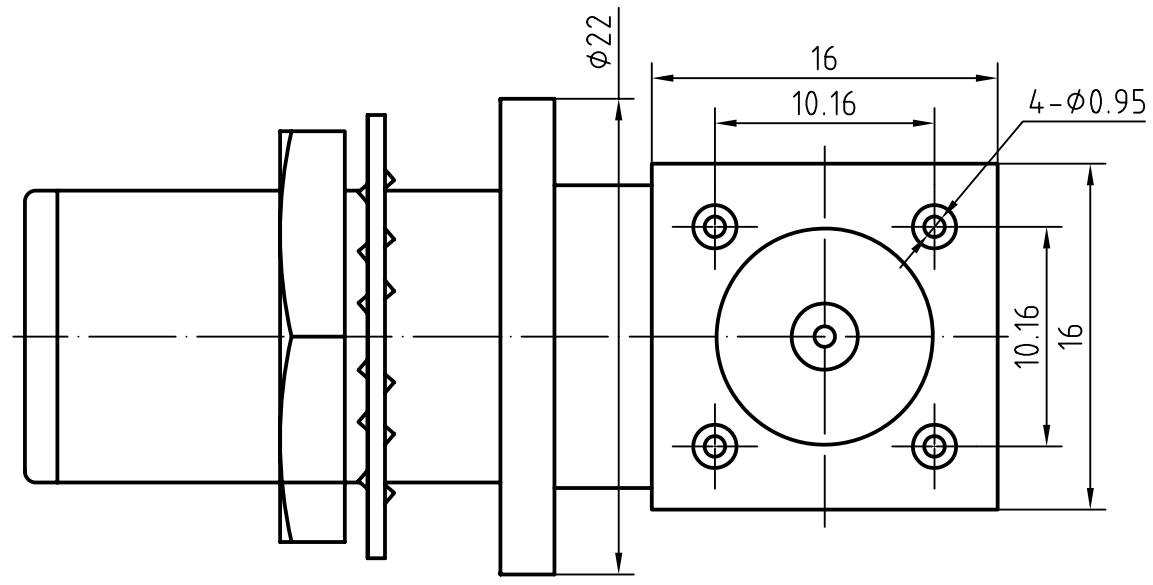
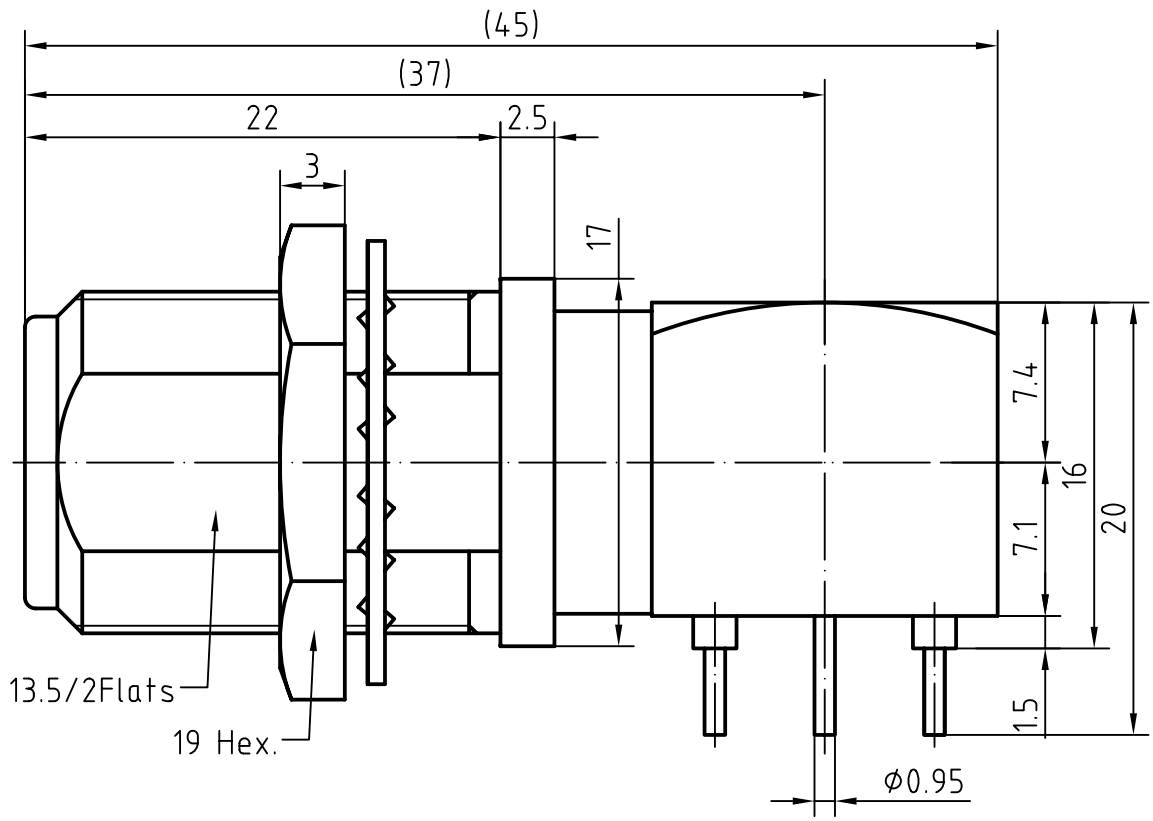


DRAWING



4	4	Soldering legs	Brass/Gold plated	Gold 0.2um over Nickel 2.0um
3	1	Insulator	PTFE	
2	1	Body	Brass/SUCOplated	CuSnZn 4.0um over copper 2.0um
1	1	Center contact	Phosphor bronze/Gold plated	Gold 0.3um over Nickel 2.0um
Itemref	Quantity	Title/Name, designation, material, dimension etc		Article No./Reference

Designed by	Checked by	Approved by - date	File name	Date	Scale
-------------	------------	--------------------	-----------	------	-------

Amitron Electronics, Ltd.	N-KYWHDA		
	http://www.amel.ru	Edition	Sheet

CHARACTERISTICS

DESCRIPTION: N Female BH+R/A for PCB soldering legs

Electrical data:

<i>Impedance:</i>	50 ohm
<i>Frequency range:</i>	DC to 11.0 GHz
<i>VSWR:</i>	$\leq 1.25\text{dB}$, DC-3GHz
<i>Insulation resistance:</i>	$\geq 5000\text{M}\Omega$
<i>Test voltage:</i>	1500 V rms
<i>Working voltage:</i>	1000 V rms
<i>Contact resistance:</i>	
1). Centre contact:	1.0 m Ω
2). Outer conductor:	0.2 m Ω

Environmental data:

<i>Temperature rating:</i>	-65 ° C to +65 ° C
<i>2002/95/EC (RoHS):</i>	Compliant

Mechanical data:

<i>Mating cycles:</i>	≥ 500
<i>Center contact captivation:</i>	$\geq 15\text{ N(axial)}$
<i>Coupling test torque:</i>	$\leq 1.7\text{ Nm}$
<i>Recommended torque:</i>	0.7 Nm to 1.1 Nm

Suitable cables:

N/A