

# Coaxial Straight Bulkhead Connector: SMA-KY2.5D

## Description

Straight bulkhead jack for Flexible cable 2.5/50D

## Interface standards

MIL-C-39012

## Technical Data

### Electrical Data

Impedance	50 $\Omega$
Interface frequency max.	12.4 GHz
VSWR	$1.10+0.025 \times f(\text{GHz})$ max
Voltage rating	500 V(rms)
Test voltage	1000 V(rms)
Contact resistance:	
Center conductor	$\leq 3$ m $\Omega$
Out conductor	$\leq 2$ m $\Omega$
Insulation resistance	$\geq 5000$ M $\Omega$

### Mechanical Data

Weight	4.2 g
Durability	500 Cycles

### Environmental Data

Operating Temperature	-65 $^{\circ}\text{C}$ to 165 $^{\circ}\text{C}$
-----------------------	--

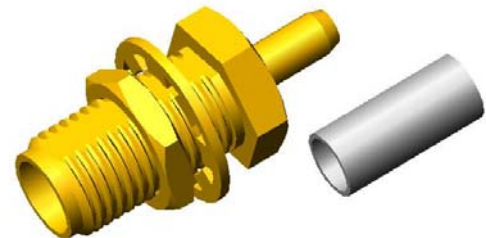
### Material Data

#### Piece Parts

Center contact  
Body  
Coupling nut  
Insulator  
Crimp ferrules

#### Material

Beryllium copper  
Brass  
Brass  
PTFE  
Brass

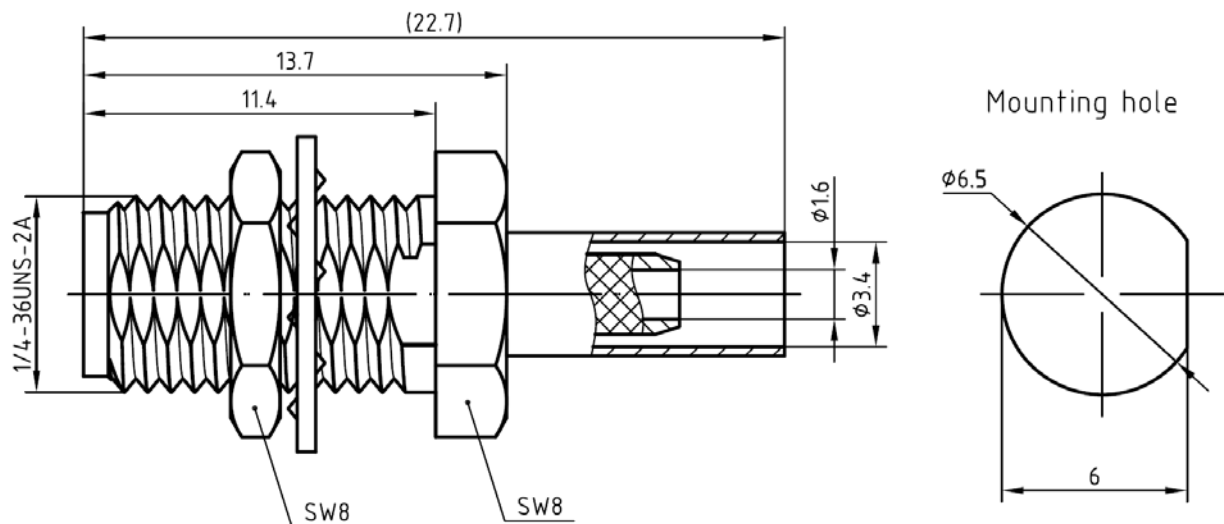


#### Surface Plating( $\mu\text{m}$ )

Gold 0.5 over Nickel 2.0  
Gold 0.2 over Nickel 2.0  
Gold 0.2 over Nickel 2.0  
Nickel 7.0 over copper 2.0

## Coaxial Straight Bulkhead Connector: SMA-KY2.5D

### Outline drawing



### Packaging

Standard

150/Box=15 Bag

Other

Contact us