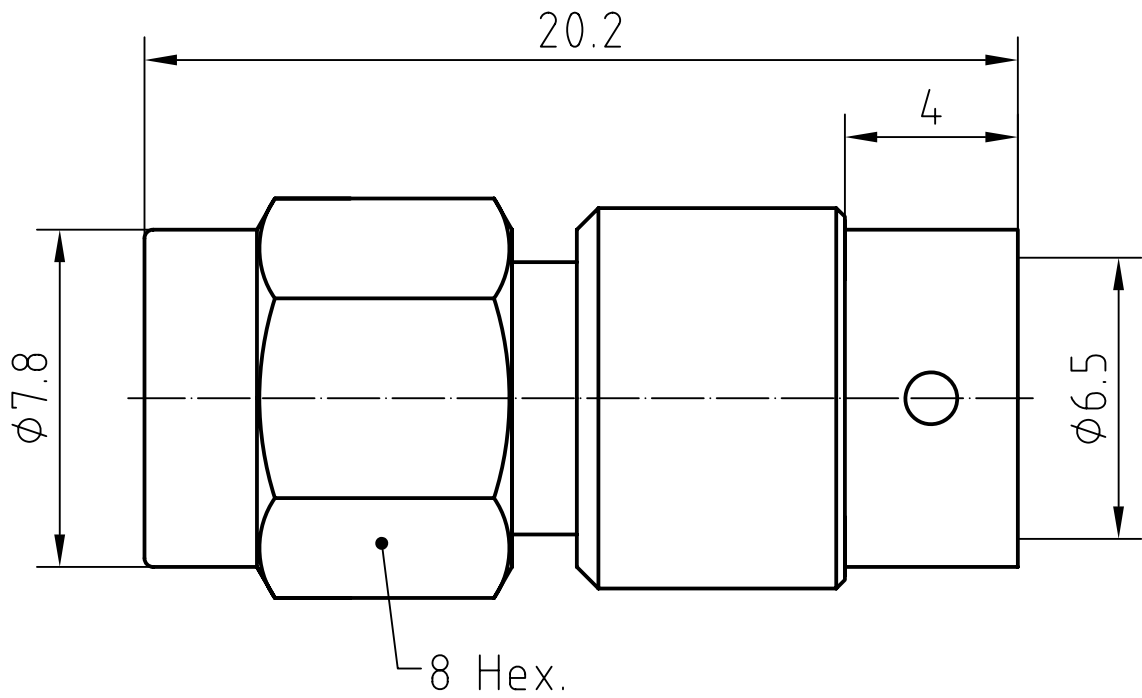
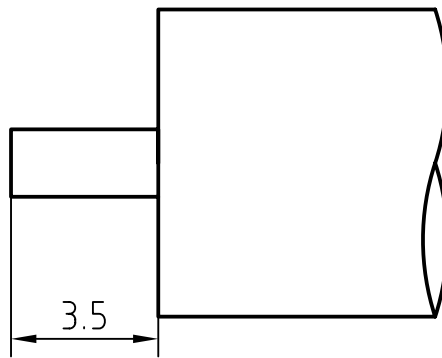


DRAWING



CABLE(UT 250, RG 401)



6	1	O ring	Silicone rubber	
5	1	Spring	Beryllium copper/Nickel plated	
4	1	Coupling nut	Brass/Gold plated	
3	1	Center contact	Beryllium copper/Gold plated	
2	1	Insulator	PTFE	
1	1	Body	Brass/Gold plated	
Itemref	Quantity	Title/Name, designation, material, dimension etc		Article No./Reference

Designed by Mingang Han	Checked by Jinlong GU	Approved by - date Hongyu Du	File name SMA-JB6	Date 11.04.28	Scale 6 : 1
----------------------------	--------------------------	---------------------------------	----------------------	------------------	----------------

Amitron Electronics, Ltd.	SMA-JB6		
	<a href="http://www.amel.ru">http://www.amel.ru</a>	Edition 1.0	Sheet 1/1

## CHARACTERISTICS

DESCRIPTION: SMA Type male connector

### Electrical data:

Impedance:	50 ohm
Frequency range:	DC to 18 GHz
VSWR:	$\leq 1.05 + 0.005 \times f$ [GHz], DC to 8 GHz
Insertion loss:	$\leq 0.03 \times \sqrt{f}$ [GHz] dB
Insulation resistance:	$\geq 5000\text{M}\Omega$
Test voltage:	1000 V rms
Working voltage:	480 V rms
Contact resistance:	
1). Centre contact:	3.0 m $\Omega$
2). Outer conductor:	2.0 m $\Omega$
Power handling (at 20 °C, sea level, VSWR 1.0)	$\leq 200$ W @ 2 GHz;
RF-leakage	$\geq 100$ dB up to 1 GHz

- Limitations are possible due to the used cable type -

### Environmental data:

Temperature rating:	-65 °C to 165 °C
2002/95/EC (RoHS):	Compliant

### Mechanical data:

Mating cycles:	$\geq 500$
Coupling nut retention	$\geq 270$ N
Coupling test torque:	$\leq 1.1$ Nm
Recommended torque:	0.46 Nm to 0.69 Nm

### Suitable cables:

UT 250, RG 401

Amitron Electronics, Ltd.

<http://www.amel.ru>

e-mail: [mailbox@amel.ru](mailto:mailbox@amel.ru)