

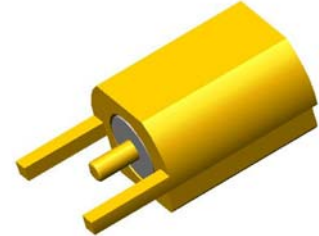
# Coaxial Straight PCB Connector: MMCX-KHTC1

## Description

Edge mount straight PCB jack

## Interface standards

MIL-C-39012



## Technical Data

### Electrical Data

Impedance	50 $\Omega$
Interface frequency max.	6 GHz
VSWR	1.05+0.05 $\times$ f(GHz) max
Voltage rating	170 V(rms)
Test voltage	500 V(rms)
Contact resistance:	
Center conductor	$\leq 10$ m $\Omega$
Out conductor	$\leq 5$ m $\Omega$
Insulation resistance	$\geq 5000$ M $\Omega$

### Mechanical Data

Weight	0.9 g
Durability	500 Cycles

### Environmental Data

Operating Temperature	-65 $^{\circ}$ C to 165 $^{\circ}$ C
-----------------------	--------------------------------------

### Material Data

#### Piece Parts

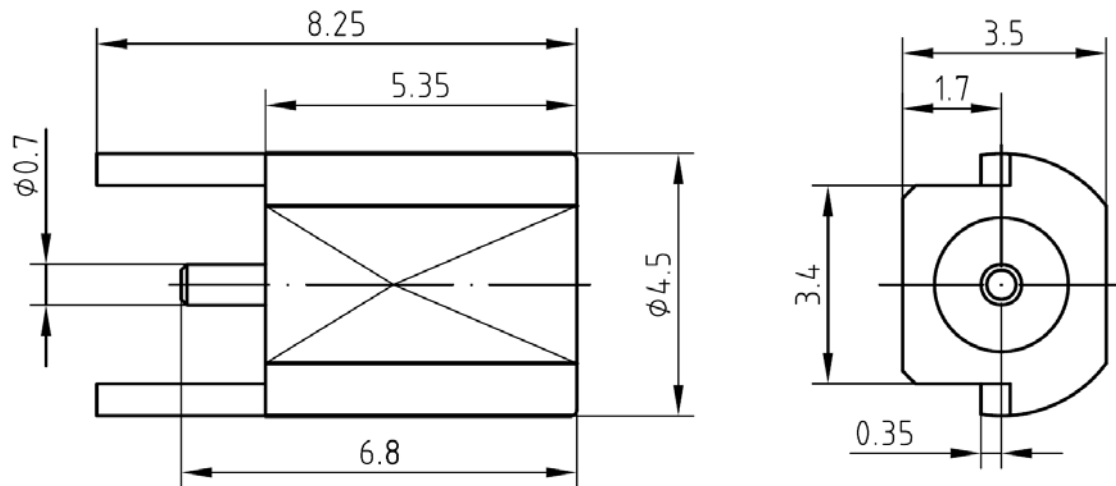
Body	Brass
Center contact	Beryllium copper
Insulator	PTFE

#### Surface Plating( $\mu$ m)

Gold 0.2 over Nickel 2.0
Gold 0.5 over Nickel 2.0

## Coaxial Straight PCB Connector: MMCX-KHTC1

### Outline drawing



### Packaging

Standard

500/Box=50 Bag

Other

Contact us