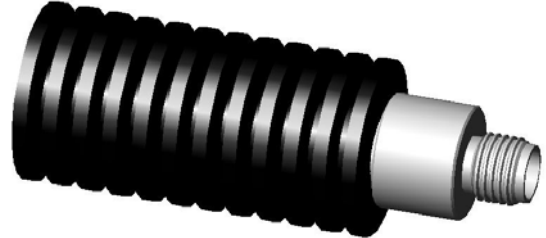


RF Coaxial Termination: RF6-50KRG12.4-10

Description

RF6 RF coaxial termination



Technical Data

Electrical Data

Impedance	50 Ω	
Interface frequency max.	DC~12.4GHz	
VSWR	DC~4.0GHz	<1.10
	4.0~12.4GHz	<1.25
Average Power:	10 W	
Peak Power:	2000 W	
Voltage rating	500 V(rms)	
Test voltage	1000 V(rms)	
Contact resistance:		
Center conductor	$\leq 3\text{m } \Omega$	
Out conductor	$\leq 2\text{m } \Omega$	
Insulation resistance	$\geq 5000\text{M } \Omega$	

Mechanical Data

Weight	63.5 g
Durability	500 Cycles

Environmental Data

Operating Temperature	-55 $^{\circ}\text{C}$ to 125 $^{\circ}\text{C}$
-----------------------	--

Material Data

Piece Parts

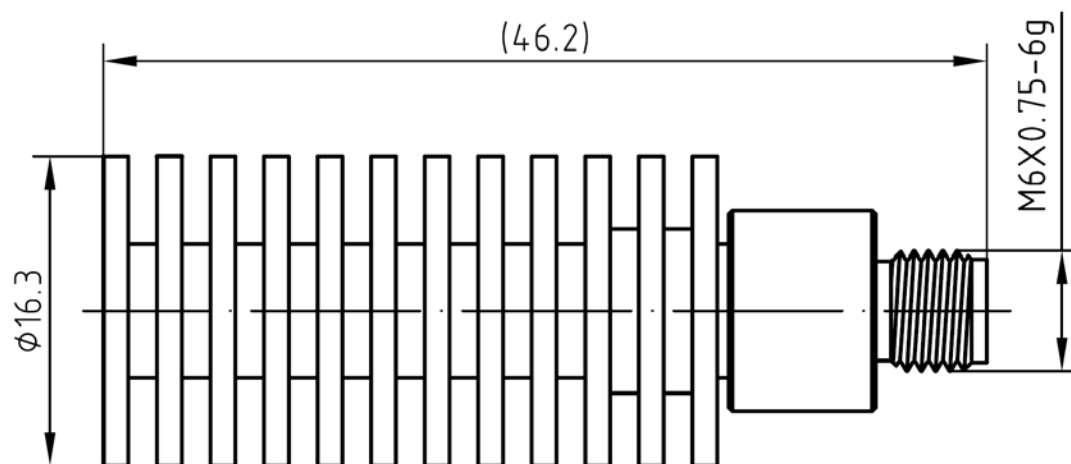
Center contact	Beryllium copper
Body	Stainless steel
Scatterer	Aluminium
Insulator	PTFE

Surface Plating(μm)

Gold 1.27 over nickle 3.0
Passivated
Black oxygenation

RF Coaxial Termination: RF6-50KRG12.4-10

Outline drawing



Packaging

Standard

Other

30/Box=6 Bag

Contact us