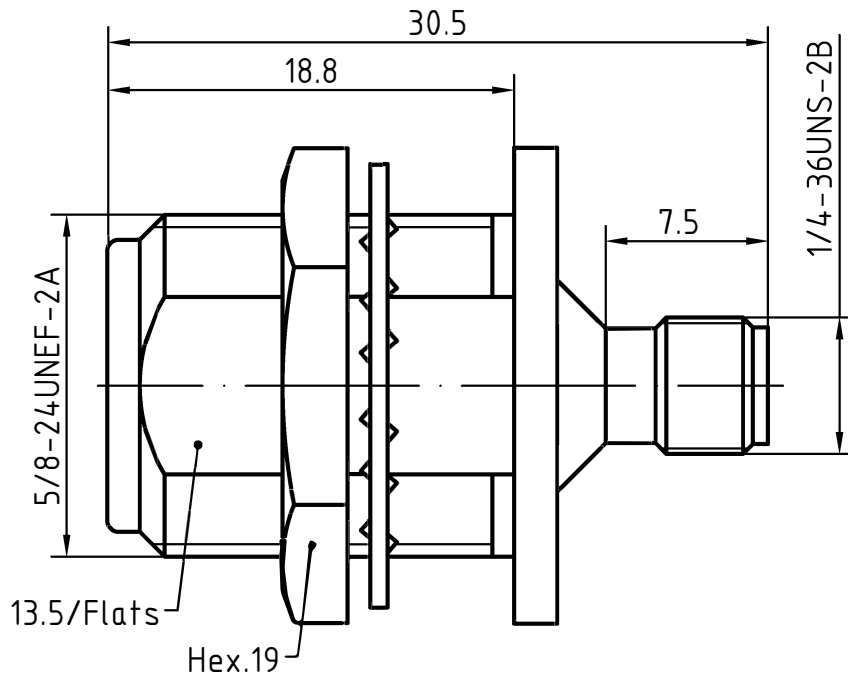
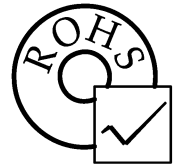
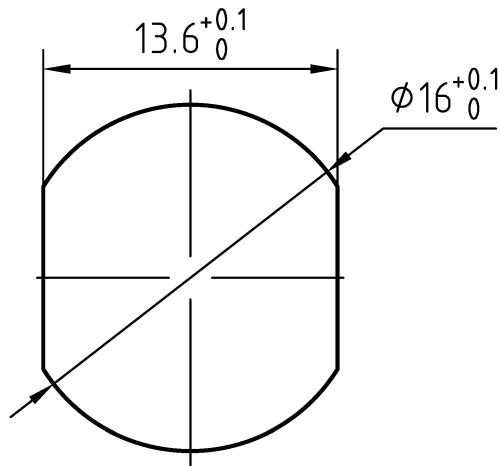


DRAWING



MOUNTING HOLE



3	1	Body	Brass/Nickel plated	
2	1	Insulator	PTFE	
1	1	Center contact	Beryllium cooper/Gold plated	
Itemref	Quantity	Title/Name, designation, material, dimension etc		Article No./Reference

Designed by Mingang Han	Checked by Jinlong GU	Approved by - date Hongyu Du	File name N/SMA-KYK	Date 07.05.10	Scale 1:1
----------------------------	--------------------------	---------------------------------	------------------------	------------------	--------------

Amitron Electronics, Ltd.	N/SMA-KYK		
	http://www.amel.ru	Edition 1.0	Sheet 1/1

CHARACTERISTICS

DESCRIPTION:

ADAPTOR N JACK BH TO SMA JACK

Electrical data:

<i>Impedance:</i>	50 ohm
<i>Frequency range:</i>	DC to 12 GHz
<i>VSWR:</i>	$\leq 1.04 + 0.03 \times f[\text{GHz}]$
<i>Insertion loss:</i>	$\leq 0.35 \text{ dB}$
<i>Insulation resistance:</i>	$\geq 5000 \text{ M}\Omega$
<i>Test voltage:</i>	1000 V rms
<i>Working voltage:</i>	480 V rms
<i>Contact resistance:</i>	
1). Centre contact:	1.00 m Ω N side 3.0 m Ω SMA side
2). Outer conductor:	0.25 m Ω N side 2.0 m Ω SMA side
<i>Power handling (at 20 ° C, sea level, VSWR 1.0)</i>	$\leq 200 \text{ W @ 2 GHz}$

Environmental data:

<i>Temperature rating:</i>	-65 ° C to +165 ° C
<i>2002/95/EC (RoHS):</i>	Compliant

Mechanical data:

<i>Mating cycles:</i>	≥ 500
<i>Center contact captivation:</i>	$\geq 27 \text{ N(axial)}$
<i>Recommended torque:</i>	0.7 Nm to 1.1 Nm

Suitable cables:

N/A