

# Coaxial Right Angle PCB Connector: SMA-JWHD

## Description

SMA Right Angle plug receptacle for PCB solder legs

## Interface standards

MIL-C-39012

## Technical Data

### Electrical Data

Impedance	50 $\Omega$
Interface frequency max.	6 GHz
VSWR	$1.08+0.05 \times f(\text{GHz})$ max
Voltage rating	500 V(rms)
Test voltage	1000 V(rms)
Contact resistance:	
Center conductor	$\leq 3\text{m} \Omega$
Out conductor	$\leq 2\text{m} \Omega$
Insulation resistance	$\geq 5000\text{M} \Omega$

### Mechanical Data

Weight	4.3 g
Durability	500 Cycles

### Environmental Data

Operating Temperature	-65 °C to 165 °C
-----------------------	------------------

### Material Data

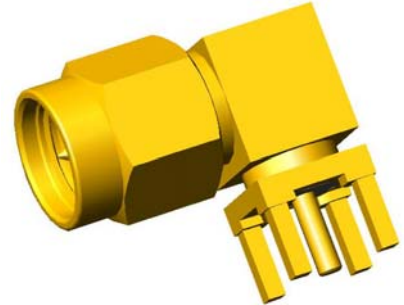
#### Piece Parts

Center contact	Brass
Body	Brass
Coupling nut	Brass
Gasket	Silicone Rubber
Insulator	PTFE

#### Material

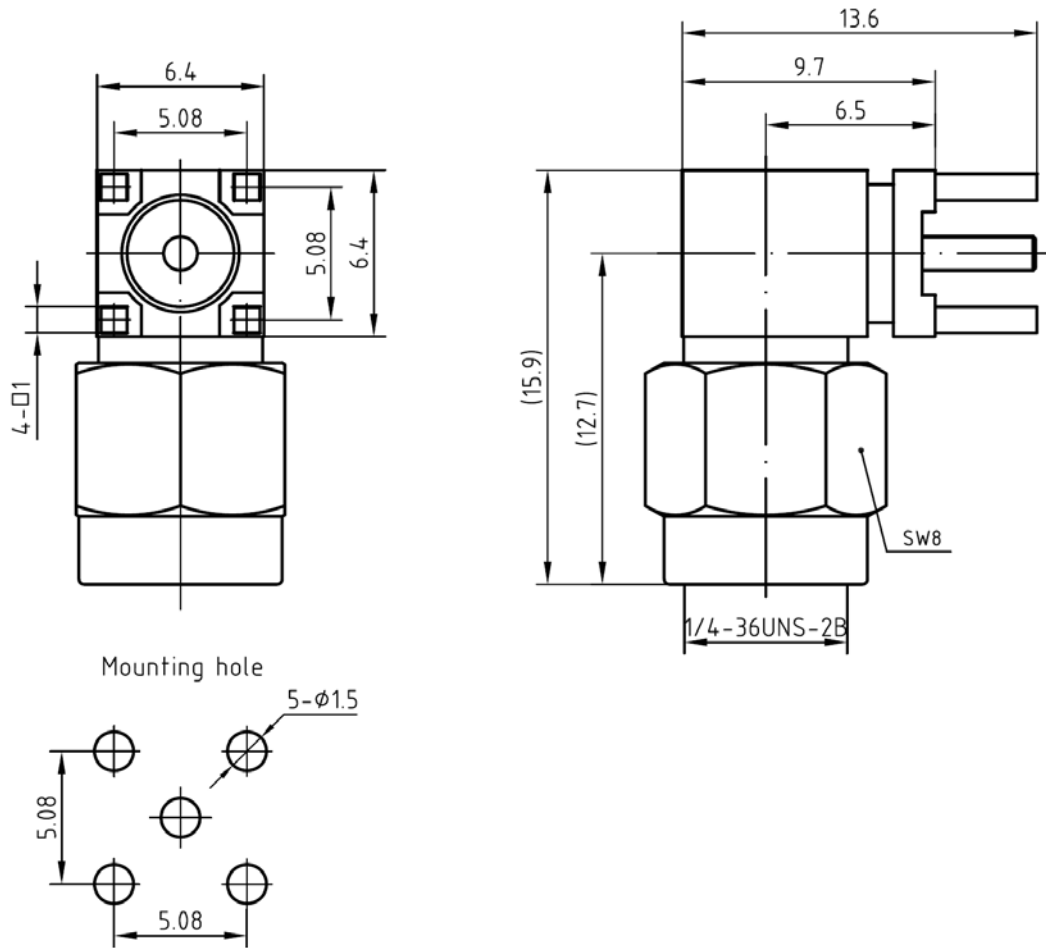
#### Surface Plating( $\mu\text{m}$ )

Center contact	Gold 0.5 over Nickel 2.0
Body	Gold 0.2 over Nickel 2.0
Coupling nut	Gold 0.2 over Nickel 2.0



# Coaxial Right Angle PCB Connector: SMA-JWHD

## Outline drawing



## Packaging

Standard

150/Box=15Bag

Other

Contact us